

# THE DALA STRATEGY 2030

Together for a sustainable Dalarna

SHORT VERSION



# Towards Dalarna 2030

---

Dalarna is facing major societal challenges, largely shared by the rest of Sweden, Europe and the world. In order to meet these challenges, we need to rally our forces, and this needs to happen now. Dalarna has the prerequisites to meet the challenges and turn them into opportunities. This is the regional development strategy of Dalarna, the Dala Strategy, and it will serve as both support and as a springboard in this work. The strategy has been developed in broad dialogue and reflects a common will and direction for the county's development. With the Dala Strategy as a common foundation, we act together towards 2030 and a sustainable Dalarna with development capacity in every part of the county.

- ▶ **The Dala Strategy** is rooted in the remit given to Region Dalarna by the Government of Sweden and the Swedish Parliament to prepare and establish a regional development strategy for the county and coordinate the implementation and follow-up of that strategy.
- ▶ **The Dala Strategy** will guide municipalities, industry, academia, civil society, and the county administrative board, as well as other government agencies in the joint work on regional development.
- ▶ **It will also contribute to** the implementation of international and national development strategies. Through a challenge-driven approach focused on sustainability, Dalarna will contribute to the implementation and achievement of Agenda 2030.



# With the societal challenges as a driving force...

---

In an increasingly interconnected world, many regions and countries share major general trends and challenges. However, because of their unique conditions and their preparedness, the impact varies between locations. These are the overall trends and challenges that affect Dalarna:

- A good skills supply despite an ageing population and urbanisation
- Sustainable growth requires good living environments and facilitating physical infrastructure
- Technical development and digitalisation create opportunities but require new infrastructure and new competencies

- Global competition increases the need for innovation and collaboration
- Stronger unity and a perception of security, participation, and inclusion are needed in times of growing polarisation
- Sustainable development and growth require an environmental transformation

These societal challenges are the starting point for the Dala Strategy and a sustainable Dalarna is a Dalarna that meets challenges and turns them into opportunities.

## ... for a sustainable Dalarna with development capacity in every part of the county

---

The overriding, long-term objective of the Dala Strategy is a sustainable Dalarna with development capacity in every part of the county. It should also not only be sustainable today, coming generations should also be able to live good lives in the Dalarna of the future. Efforts in three target areas drive the work towards a sustainable Dalarna:

### **A climate-smart Dalarna**

### **A competitive Dalarna**

### **A cohesive Dalarna**

Like the global sustainable development goals, the goals in the Dala Strategy are integrated and indivisible, which means that one goal may not be achieved at the expense of other goals. In order for Dalarna to achieve sustainability, transformation is required in every part of society.

Each dimension of sustainability also comprises the issue of societal resilience. Resilience is about both the power of resistance and the ability to handle changes and continue to develop.

Development capacity means that there is a local and regional capability to pursue development issues. This capacity may be economic and political, but it is also a matter of knowledge and commitment. By working based on each location's challenges, opportunities, and resources, the regional development efforts should contribute to development capacity in every part of Dalarna.

The societal challenges that the Dala Strategy should meet are complex and often interrelated. This means that new solutions need to be developed and jointly managed across sectors. In order to achieve a sustainable Dalarna, we need to gather our forces together – pursue joint action towards 2030.

## Position 2030

## Priorities

### A climate-smart Dalarna

- Dalarna achieves the national energy and climate goals.
- With new technologies and ways of thinking, Dalarna is a role model in the efforts for more sustainable mobility.
- Dalarna has improved biodiversity and strengthened preparedness to meet climate change.

- Promoting the efforts of the public and private sectors to reduce their net greenhouse gas emissions.
- Working for increased production of renewable electricity and more efficient use of energy.
- Promoting a circular economy and resource efficiency.
- Enabling sustainable travel and transports.
- Strengthening strategic sustainable and robust urban planning.
- Developing green infrastructure.
- Working for strengthened ecosystem services.

### A competitive Dalarna

- Dalarna's strong business community is a leader in sustainability, which has paved the way for new export and investment opportunities.
- Dalarna has a well-developed infrastructure that allows for larger regional labour markets and meets the transportation needs of the industry.
- Dalarna has strengthened the conditions for the county's skills supply through a well-functioning structure for matching, a higher level of education and a well-developed lifelong learning.
- Dalarna has a high level of innovation capacity that meets societal challenges and develops both business and welfare.

- Working for diversified enterprise that is at the forefront of the sustainability work.
- Working for increased investments, exports and internationalisation.
- Promoting entrepreneurship and enterprise.
- Taking advantage of the opportunities of digitalisation.
- Industry and tourism continue to be important sectors.
- Working for increased accessibility in the transport system by strengthening efforts for inter-modal traffic transfers and transfers across geographic borders.
- Working for improved commuting possibilities that provide increased accessibility to work and studies.
- Working for increased investments and maintenance on transport routes prioritised for the county.
- Creating conditions for a good match between the workforce's skills and the labour market's needs.
- Working for higher levels of education and strengthening lifelong learning.
- Working to enable more people to receive higher education and strengthening the presence of academia in every part of the county.
- Working for an equal labour market with gender equality where everyone's skills are utilised.
- Stimulating interaction between business, academia, the public sector, and association life for strengthened innovation capacity.
- Strengthening strategic research and innovation environments with a focus on areas where Dalarna is strong.
- Working to attract more knowledge-intensive companies with innovation capacity.

## Position 2030

## Priorities

### A cohesive Dalarna

- In Dalarna, there are diversified forms of housing that counteract segregation and polarisation.
- In Dalarna, there are attractive living environments and basic services in every part of the county.
- Dalarna is characterised by a strong and inclusive social involvement.
- In Dalarna, people feel involved and trust in the democratic system.
- Equal living conditions and good health give everyone in Dalarna the opportunity to develop.
- Developing a regionally unified urban planning that contributes to good, inclusive living environments and residential environments.
- Enabling varied residential construction.
- Working for greater accessibility to service for residents, businesses, and visitors.
- Working for greater accessibility to health care and social care.
- Working for greater accessibility to culture and education.
- Strengthening digital infrastructure.
- Enabling an increased involvement and active co-creation in community development.
- Strengthening the social contract and increasing togetherness and trust, between people and society.
- Strengthening digital participation.
- Working for more collaboration between the public sector, industry, and civil society.
- Working for greater social, civil, and gender equality.
- Working for greater inclusion.
- Working for a strengthened child and youth perspective.
- Working to strengthen the opportunities for the elderly to participate and contribute to society.
- Working for good and improved health.

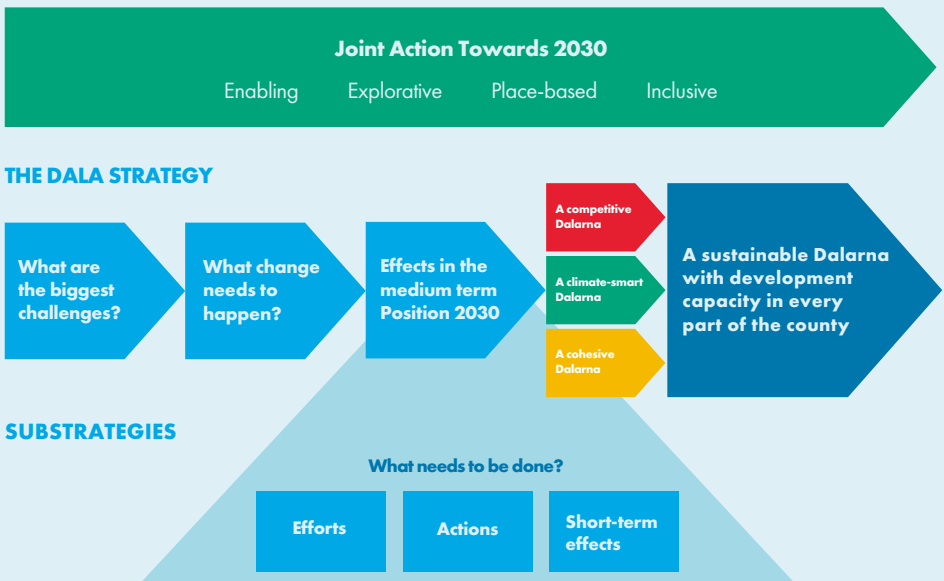


# From words to deeds

In order to achieve the goals in the Dala Strategy, we need to gather our forces – in joint action. Four guiding principles will form the basis for joint action and provide strength in the transformation:

- We exercise leadership that is characterised by trust and enabling.
- We work based on knowledge while we also have an exploratory approach.
- We take advantage of the conditions and opportunities of different locations.
- We utilize people´s drive, competence, and commitment.

The Dala Strategy is a comprehensive and long-term strategy pointing out a common direction. The use of methods and work practices that ensure goal fulfilment is required for a strong implementation. A common logic of transformation, which is a systematic way to formulate the relationships between challenges, objectives, and efforts, forms the core of this work:





Multi-level governance model: A broad range of efforts in many policy areas is important to achieve the goal of the regional development policy. Such efforts are based on the goals that have been decided at different levels, and for different policy areas, but where efforts also contribute to achieving the goal of the regional development policy.

- **Sub strategies.** The content of the Dala Strategy is further developed and made concrete in sub strategies and action plans.
- **Follow-up and evaluation** of the regional development efforts will take place annually to ensure that efforts and projects lead to the desired societal development. A central part of the follow-up work is the indicators that are linked to the respective target area.
- **Networks.** Region Dalarna coordinates/ leads networks where regional actors meet, discuss, and report both joint and individual efforts and lessons learned in relation to the Dala Strategy.

- **Shared learning.** In a regional development effort concerned with finding new solutions, working with an exploratory approach, and sometimes steering towards unknown goals, shared learning is crucial. Increased knowledge and learning among various actors contribute to the possibilities of achieving the common goals.



The Dala Strategy is Dalarna's regional development strategy. It is rooted in the remit that Region Dalarna has been given by the Government of Sweden and the Swedish Parliament to prepare and establish a regional development strategy for the county and coordinate the implementation and follow-up of that strategy. The regional development strategy will guide municipalities, industry, academia, civil society and the county administrative board, as well as other government agencies in the joint work on regional development.

[www.regiondalarna.se/dalastrategin](http://www.regiondalarna.se/dalastrategin)

